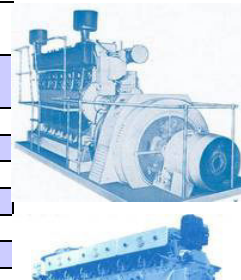


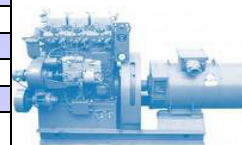
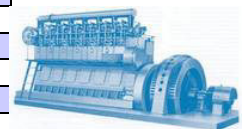
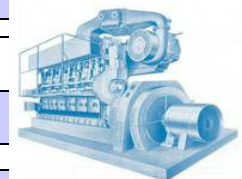
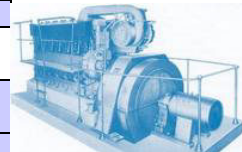
DIESEL GENERATORS HRADEC				
Output kVA	Frequency Hz	Voltage V	Diesel engine Type	R.P.M
320	50	400 / 231	6S275	500
405	50	400 / 231	6S275III	600
405	50	400 / 231	6-27,5 A0S	600
500	50	400 / 231	6S275PN	500
608	50	400 / 231	6S275IIIPN	600
608	50	400 / 231	6-27,5 A2S	600
825	50	400 / 231	6S275IIIPV	600
825	50	400 / 231	6-27,5 A4S	600
860	50	400 / 231	6S350PN	375
860	50	6300	6S350PN	375
860	50	11000	6S350PN	375
1450/1525	50	6300	9S350IIPS	375
1450/1525	50	11000	9S350IIPS	375
1450/1525	50	6300	9TS35/50-2	375
1450/1525	50	11000	9TS35/50-2	375
1525	50	6300	9S350IIPS	375
1525	50	11000	9S350IIPS	375
1525	50	6300	9TS35/50-2	375
1525	50	11000	9TS35/50-2	375
1600	50	400 / 231	6-27,5 B8S	750
1600	50	6300	6-27,5 B8S	750
1600	50	11000	6-27,5 B8S	750
2140	50	6300	8-27,5 B8S	750
2140	50	11000	8-27,5 B8S	750
2270	50	6300	6-38 A6S	500
2270	50	11000	6-38 A6S	500
2300	50	6600	6C38GSD	500
2300	50	11000	6C38GSD	500
3250	50	6300	12V27,5 B8S	750
3250	50	11000	12V27,5 B8S	750
405	60	400 / 231	6-27,5 A0S	600
608	60	4160 / 2400	6-27,5 A2S	600
825	60	4160 / 2400	6S350PN	360
1380	60	4160 / 2400	9TS35/50-2	360
1530	60	4160 / 2400	6-27,5 B8S	720
3120	60	4160 / 2400	12V27,5 B8S	720

DIESEL GENERATORS CKD HOROVICE				
Output kVA	Frequency Hz	Voltage V	Diesel engine Type	R.P.M.
36	50	400 / 231	3S110	1500
37	50	400 / 231	3S110	1500
48	50	400 / 231	4S110	1500
50	50	400 / 231	4S110	1500
73	50	400 / 231	6S110	1500
75	50	400 / 231	6S110	1500
140	50	400 / 231	6S160	1000
150	50	400 / 231	6S160PN	750
200	50	400 / 231	6S160PN	1000
340	50	400 / 231	6S150PV-3	1500
360	50	400 / 231	6S150PV-3	1500
700	50	400 / 231	12V150T	1500
720	50	400 / 231	12V150T	1500
120	60	231 / 133	6S160	900
120	60	440 / 254	6S160	900
180	60	231 / 133	6S160PN	900
180	60	440 / 254	6S160PN	900
240	60	440 / 254	6S150PV-3	1200
560	60	440 / 254	12V150T	1200

MARINE AND STACIONARY ENGINES CKD BRAND KNOWN AS SKODA ENGINES			
Output HP	Output kW	Engine Type	R.P.M
30	22	2S 110	1500
45	33	3S 110	1500
60	44	4S 110	1500
90	66	6S110	1500
30	22	2L 110	1500
45	33	3L 110	1500



60	44	4L 110	1500
90	66	6L 110	1500
90	66	4L 160	750
135	99	6L 160	750
195	143	6L 160 PNS	750
195	143	6L 160 PN	780
244	179	6L 150 PV-2	1500
257	189	6L 150 PV-3	1500
300	221	4L 275 III	600
460	338	6L275 III	600
460	338	6-27,5 AOL	600
550	404	6L275 PN Rr	500
700	515	6L275 III PN	600
700	515	6-27,5 A2L	600
980	720	6L350 PN	375
1670	1227	9L350 II PS	375
1670	1227	9TSR 35 / 50-2	375
2000	1470	8DR 43 / 61	250
2000	1470	6TSR 52,5 / 72 (6L525)	230
2200	1617	6TSR 52,5 / 72 (6L525)	230
2500	1838	6TSR 52,5 / 72 (6L525)	250
3000	2205	6TSR 52,5 / 72 (6L525)	250
3500	2573	6TSR 52,5 / 72 (6L525)	250
1810	1330	6-27,5 B8L	750
2410	1771	8-27,5 B8L	750
3620	2661	12V-27,5 B8L	750
2640	1940	6-38 A6R	500



**MARINE AND STACIONARY ENGINES CKD
BRAND KNOWN AS SKODA ENGINES**

Output HP	Output kW	Engine Type	R.P.M
30	22	2S 110	1500
45	33	3S 110	1500
60	44	4S 110	1500
90	66	6S110	1500
30	22	2L 110	1500
45	33	3L 110	1500
60	44	4L 110	1500
90	66	6L 110	1500
90	66	4L 160	750
135	99	6L 160	750
195	143	6L 160 PNS	750
195	143	6L 160 PN	780
244	179	6L 150 PV-2	1500
257	189	6L 150 PV-3	1500
300	221	4L 275 III	600
460	338	6L275 III	600
460	338	6-27,5 AOL	600
550	404	6L275 PN Rr	500
700	515	6L275 III PN	600
700	515	6-27,5 A2L	600
980	720	6L350 PN	375
1670	1227	9L350 II PS	375
1670	1227	9TSR 35 / 50-2	375
2000	1470	8DR 43 / 61	250
2000	1470	6TSR 52,5 / 72 (6L525)	230
2200	1617	6TSR 52,5 / 72 (6L525)	230
2500	1838	6TSR 52,5 / 72 (6L525)	250
3000	2205	6TSR 52,5 / 72 (6L525)	250
3500	2573	6TSR 52,5 / 72 (6L525)	250
1810	1330	6-27,5 B8L	750
2410	1771	8-27,5 B8L	750

3620	2661	12V-27,5 B8L	750
2640	1940	6-38 A6R	500

DIESEL GENERATING SETS - SKODA BRAND					
Output kVA	Frequency Hz	Voltage V	Type	Engine	R.P.M
860	50	400 / 231	EZS 860 /50 -230D	6S230T	1000
1250	50	400	EZS 1250 kVA	6S310T	750
1250	50	6300	EZS 1250 kVA	6S310T	750
1250	50	11000	EZS 1250 kVA	6S310T	750
1720	50	400	EZS 1720 kVA -230D	12VS230T	1000
1720	50	3300	EZS 1720 kVA -230D	12VS230T	1000
1720	50	6300	EZS 1720 kVA -230D	12VS230T	1000
1720	50	11000	EZS 1720 kVA -230D	12VS230T	1000
800	60	440 / 254	EZS 800 / 60 - 230D	6S230T	900
1250	60	440	EZS 1250 kVA	6S310T	720
1250	60	2400	EZS 1250 kVA	6S310T	720
1250	60	4160	EZS 1250 kVA	6S310T	720
1250	60	10000	EZS 1250 kVA	6S310T	720
1520	60	400	EZS 1520 kVA - 230D	12VS230T	900
1520	60	2400	EZS 1520 kVA - 230D	12VS230T	900
1520	60	10000	EZS 1520 kVA - 230D	12VS230T	900

TRACK – LOCOMOTIVE ENGINES SKODA BRAND					
Output kW			Engine		R.P.M
1103			K 6S 310 DR		775
883			K6S 230 DR		1250
1460			K12V 230 DR		1100

ENGINES SLAVIA BRAND					
Output HP	Output kW		Engine type		R.P.M
10	7,35		1S 90A		3000
20	14,7		2S 90A		3000
40	29,4		4S 90A		3000
25,4	18,7		2S 95A3		2900

DIESEL GENERATORS SLAVIA BRAND					
Output kVA	Frequency Hz	Voltage V	Type	Engine	R.P.M
6	50	400/231	DES 6S	1S 90A	3000
13	50	400/231	DES 13	2S 90A	3000
27	50	400/231	DES 27	4S 90A	3000
13	60	231/133	DES 13	2S 90A	3000

